



May VOL. 11 ISSUE 5

Master Gardener

PINELLAS COUNTY

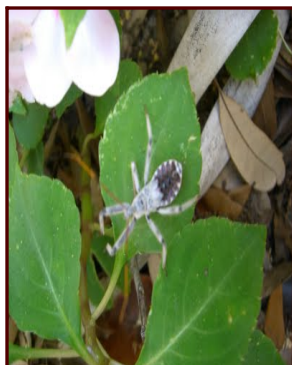
Inside this Issue:

- 2 Lubber Grass-Hoppers
Oak Leaf Blister
- 3 Aloe Vera & Humming
Bird
- 4 MG Up-date Tour
- 5 Yard Tour
- 6 Foundation Up-date
- 7 Orchid Lady
Facebook
- 8 MGs Honored
- 10 Important and
Educational
Announcements
- 13 Theresa's Plantcetera

UF UNIVERSITY of
FLORIDA
IFAS Extension
Pinellas County Extension

Watch Out for Assassin Bugs

By JANE MORSE, UF/IFAS Extension Agent, Pinellas County Extension



These bugs are meat-eating hunters! They are very beneficial in the landscape/garden as they prey (feed) on a wide variety of pest insects such as caterpillars, stinkbugs, aphids, and beetles. However, they are general predators and may also feed on each other and other beneficial insects. Since assassin bugs (also known as wheel bugs) are also preyed upon they have developed a unique defense system, they use their beak to squirt venom at their attacker as far as a foot away!

Assassin nymphs (young) are abundant this year. Several specimens have been brought into the Pinellas County Extension Lawn and Garden Help Desk for identification.

They come in many shapes and sizes as there are over 3,000 species. Their length can vary from less than ¼ inch to 1 ½ inches, and they have only one generation per year. ALL assassin bugs have a powerful, curved beak that they use to pierce and inject dissolving venom into their prey. Once the inside of the prey is turned to liquid, the assassin bug uses its beak to suck out the liquefied tissues, much like we use a straw to drink a milkshake!

This powerful beak packs a mean wallop, so be careful when working in the landscape/garden. When disturbed the wheel bug can inflict a bite described as worse than stings from bees, wasps, or hornets.

Remember they are doing free pest control in your landscape/garden, so it is very good to have them around. If you see them it is best to leave them alone, but you may want to watch them hunt for other bugs to eat. The landscape/garden can be a fascinating place to watch insects in action.

Avoid blanket spraying of insecticides and instead only spot-treat plants. Try using horticultural oils and insecticidal soaps rather than the more toxic insecticides. This will help to preserve these and other beneficial insects that are doing free pest control for you.

To learn more about the assassin (wheel) bug see these web links:

<http://edis.ifas.ufl.edu/in243> or <http://ipm.ifas.ufl.edu/pdf/assassinbug.doc>



The Green Leaf is published by Pinellas County Extension for Master Gardeners and others. The monthly newsletter depends on submission of articles from Master Gardeners, Extension staff and other authors.

Please submit articles and photographs to

cscaffidi@co.pinellas.fl.us

The Green Leaf and archives are available on-line by clicking on [newsletter](#)

MANAGING EDITOR:
Chuck Scaffidi, MG

ASSISTANT EDITOR:
Kathleen Jamison, Volunteer

We are especially appreciative of staff, MGs, and others who contribute articles, events and other items of interest to *The Green Leaf* each month. Please submit by the 20th of each month. This will help us assemble and publish the newsletter in a timely manner. Articles should be 700-800 words or less. If you would like a copy of any photograph printed in the newsletter, contact MG Editor Chuck Scaffidi at **727 582-2117**.

cscaffidi@co.pinellas.fl.us

Look Out for Lubber Grasshoppers!

By JANE MORSE, UF/IFAS Extension Agent, Pinellas County Extension

They come pouring out of the ground like some Biblical plague. The nymphs are almost all black with either a yellow or red thin stripe down their back, and they emerge in mass. Soon you will find them eating your plants.

Their favorite plants to munch are amaryllis, crinum, and rain lilies. They aren't too choosy about their food source and will also eat a wide range of cultivated plants including citrus, vegetables and landscape ornamentals.

The adults look rather menacing, but they don't bite. In an effort to scare you away they can hiss and spit up recently consumed plant material which can stain clothing. They also don't fly, but jump short distances to get around.

Grasshoppers are much easier to control when they are nymphs (young). Start searching for them at the end of the day when they are slower moving and sitting on the tops of plants. They are easy to crush or squash, or knock into a bucket of soapy water where they will drown. Populations are not usually high enough to warrant the use of pesticides. You may even have an unexpected helper, the tachinid fly *Anisia serotina* (Reinhard), which can kill 60-90% of their population.

Any adults, usually seen by midsummer, should be dispatched before they have a chance to reproduce. They have one generation per year and the female lays her eggs in the soil during the summer months. She usually lays about 50 eggs in a foamy froth about two inches deep in the soil. The young hatch in early spring.

Now is the time to get out in the landscape, search out the nymphs, and either smash or drown them. Happy hunting.

For more information about lubbers see this UF/IFAS publication:
<http://edis.ifas.ufl.edu/in132> ■



Oak Leaf Blister

By JANE MORSE, UF/IFAS Extension Agent, Pinellas County

Are your oak leaves looking rather unsightly with lots of brown spots and odd growth? Recent samples brought to our "horticulture help desk" turned out to be oak leaf blister. If your tree has these symptoms then don't be too concerned, it is not going to kill your tree.

Symptoms: Initially pale green, blisterlike, circular, sunken or raised areas 1/16 to 1/2 inch in diameter appear on the leaves in early spring. These blisters turn brown and necrotic (dead) later in the season. Severe infections cause distortion of the newly expanding leaves. Usually the top side of the leaf will have raised brown areas, whereas the corresponding bottom side of the leaf will have sunken areas. In some instances you may have the reverse of this.



What causes it: The fungus *Taphrina caerulescens*

Host plants: Many oak (*Quercus*) species. Members of the red/black oak subgroup are typically most susceptible.

Weather patterns that promote disease development: Cool, wet, spring weather is required for infection to occur on young leaves. If these conditions prevail, severe infection can occur. If weather conditions are not favorable for infection shortly after bud break then symptoms will be mild. Rake up the leaves to reduce the number of infecting spores that could cause infection the following year.

Management: The disease does not harm the tree, it is a surface blemish. It is best to leave the tree alone. Fungicide treatment may be considered for high value trees if a wet spring is predicted and if there was a severe infection the previous year. A single fungicide application in late winter just before the buds begin to swell will manage this disease, but this is rarely warranted. Fungicides applied after bud break are much less effective. Several pesticide products containing the active ingredient chlorothalonil may be registered for this use. **WARNING:** As with all pesticides, all product labeling regarding application rates, concentrations, safety precautions, etc. must be followed precisely. This is a federal law.

Homeowners are strongly discouraged from applying pesticides to trees because of concerns of drift and applicator contamination. Pesticide application to trees is best done by a pest control service. ■

Aloe Vera and Hummingbirds

Photos and Article by JOANNE DRAKE, MG

Those showy, red-orange, tubular flowers on the excessively long stalks of the aloes are in full bloom right now! The most famous kind of hummingbird, the ruby-throated, is drawn to the sweet nectar of this succulent plant (perennial) that loves full sun or partial shade. It also prefers warmer weather, Spring, for their blossoms to unfurl.

Imagine the statement these plants can make, in full bloom, if planted three to six in a row. You'll have more flowers to admire plus a big attraction for bees and hummingbirds. The long stalks bring the flowers to eye-level ... giving you a better chance of spotting a hummingbird. Sometimes, the aloes are so heavy with bloom ... they can become top-heavy and blow over. I've solved that problem in our garden, by using a tall garden spike, pushing it into the soil at the base of the aloe and then use a twist-tie to keep the stalk upright with the spike.

Aloes grow well in sand gardens or even as a potted plant... repot every two to three years. Aloes are happy in most soils and do extremely well in beach area landscaping ... salt tolerant. Water them moderately during our drought season.

These plants can give your garden or patio a tropical look and bring a lot of conservation with the sighting of a hummingbird as the neighbors stop to admire both!



To see Ruby Throated Hummingbirds in Central Florida

Visit: <http://www.youtube.com/watch?v=PO0os4qmwps>

So Much to See, So Little Time: MG Tour of UF/HCC Teaching Garden

By ELLEN MAHANY

More than thirty master gardeners convened at the University of Florida / Hillsborough Community College Teaching Garden at the HCC Plant City Campus for the April 8 MG meeting to tour several amazing teaching gardens focusing on gardening in Central Florida.

Dr. Sydney Park-Brown, associate professor of environmental horticulture, guided us through thirteen gardens and a greenhouse (so much to see) on the two-hour tour (so little time).

We saw so many plants and gardening strategies that do well in Central Florida that only some can be touched upon:

- Twelve low- maintenance rose shrubs being compared in a research project designed to find the best species for our area
- Highly recommended plants such as St. Bernard's lily with its long-stemmed, delicate white flowers that bloom year round
- Several species of grass-like plants grouped to provide soothing sound, form, texture, and color
- Attractive combinations of summer and winter plants for year- round color
- Several innovative ways of growing plants —among them a stack of Styrofoam pots for vertical gardening and an on-the-ground vegetable kit featuring knee pads
- A moss arbor that shows the benefits of Spanish moss to protect immature plants and provide shade
- The beautiful red oxalis and coleus among several other outstanding species in the greenhouse
- Interesting combinations of plants in pots and beds, shade and flowering trees, native plants, tropical plants, drought tolerant plants. Here we add part of Theresa Badurek 's column title: "Etcetera."

Following our tour, Theresa's scavenger hunt offered a second exploration of the gardens to add to our knowledge.

After viewing so many wonderful plants and new gardening ideas in this acre- and- a- half area, we enjoyed highly individual reactions and shared a feeling of sensory overload.

We had so little time to absorb so much. Thankfully, at our convenience we can experience a virtual tour online as well as check for any species in the gardens through the alphabetical listing of plants by common and scientific names with complete growing advice and garden locations. Also available are power point presentations and handouts for "Fabulous Foliage" and "Alternative Vegetables." To access online information, go to <http://gcreec.ifas.ufl.edu/pcc/default.htm>

Free to the public, the teaching garden is part of the Gulf Coast Research and Education Center, which offers a University of Florida satellite teaching program at the HCC Plant City Campus.



Master Gardeners Tour "An Acre of Paradise"

By ELLEN MAHANY

"It's heaven to me," says Linda Culhane of her amazing garden, which she shared with several fellow master gardeners during the April MG garden tour at her home.

Bordering Allen Creek, her acre of designated pine forest allows room for both formal and more natural gardens and a great variety of plants. It also offers wonderful filtered light and the indispensable vertical element which makes a garden special.

Linda's divine design has been a gradual process, dating back to 1985. "Then, it was nothing but dirt and palmetto," she says. And one of the pine trees stood so near her house it had to be cut. By the way, its trunk is now the base of a patio table, as pictured on right.

Beyond the ample patio lies a long clear blue pool, the centerpiece of her social area. A row of staked confederate jasmine vines, fragrantly in bloom, flanks one length of the pool, with graceful pine trees in the background.

Various garden beds border the other length. At the patio end of the pool, trellised old blush and cracker rose bushes bask in the sun, and at the other end a continuation of confederate jasmine combines with red knockout roses. A black iron fence enclosing this area contributes to the more formal design.

The back gate leads to a large area ending at Allen Creek. Here is room for a large vegetable garden, a huge compost area, and fields of various wild flowers. The side yard offers even more room for another attractive garden.

Linda's knowledge of plants and originality in displaying them are evident everywhere. A master of container gardening in one bed she uses a couple of liners for a chimney flue among several adobe-colored pots. Nearby is a wide tree trunk with several cavities, each filled with colorful portulaca as seen in photo above right.

In more than one bed sits a large glass jug as a finishing touch. In one roomy bed even an unappreciated beggar's tick gains respectability from proximity to its more cultivated neighbors, among them, bulbine, crown-of-thorns and succulents. The several earthbound beds produce varieties of colors and shapes below the prominent manmade and natural vertical elements.

Linda's plants go higher and higher. In the picture at left, two master gardeners look up to admire a fast-traveling Dutchman's pipe, which enjoys an arbor all to itself.

A coral vine spreads comfortably in another arbor. On a lower roof of the house a queen's wreath shows its final blooms, and high in the sky the bright pink of a bougainvillea vine peaks through the pine boughs, as seen in photo below left.

In Linda's earthly paradise there is room for everything and everyone. In the picture below right, viewed through Surinam cherry tree branches, several master gardeners visit in the large patio. As the sun travels higher in the sky, visitors can change their seats to enjoy the shade.

A garden of this magnitude, with years of effort in the making, routinely requires hours of toil. Linda typically spends two days a week maintaining it and commented that cleaning out the winter clutter took two months. She mentions her battle with nut sedge in

the vegetable garden. Generally, the compost-rich soil and thick mulch ease the weeding process. And in Linda's pine paradise, shady and breezy and fragrant, she obeys one rule we would all like to abide by: "I always garden in the shade." Now, that would be heaven!



FBG Foundation Up-date

By CHUCK SCAFFIDI, FBG Foundation President

The mosaic that will soon fill the Wedding Garden's four empty pools with glass water, goldfish and lily pads have been completed and stored waiting to be installed.

As we all had been anxiously waiting for, the County approved the method of construction and we have started. Our hope is the first fountain will be completed by mid May. We will keep you posted as we progress .

Heather Anderson has been keeping busy with several other art projects. She has worked with the VA at Bay Pines to do a mosaic planter (pictured below left), she painted 3 murals on the inside walls of the Tropical Plaza building (below right), and then came up with the idea of displaying hand crafted mosaics by children. Story and picture follows:



"The Florida Botanical Gardens Foundation is proud to announce the installation of the children's art wall. It is located in the Palm garden on the south wall. The 28 8" squares were made by the 9 to 13 year old students at The Martin Luther King community center in Clearwater. Area artist Heather Anderson who designed and made Aquatic Reflections the mosaic that is covering the fountains in the wedding garden worked with the boys and girls to make the mosaic's. Ms Anderson talked with the FBG Foundation and said I have all this left over glass what if I had kids make squares and could we display them in the FBG. There was a wall in the Palm Gardens that has been crying out for something. The kids were great to work with and they were so talented as everybody can see from their work. This exhibit will be up for a year and then they squares will be returned and a new children's exhibit will be installed."



Orchid Lady!

Who cares for our orchids in our greenhouse, show cases them in our lobby and gardens, and teaches the growing and care of them? MG and FBG Foundation member Terry Berube. **Thanks Terry!**



Terry pictured demonstrating orchid potting and care at our North County help desk lecture series.

Pictured at right MG Cheryl Korschek and Terry talking to attendees.

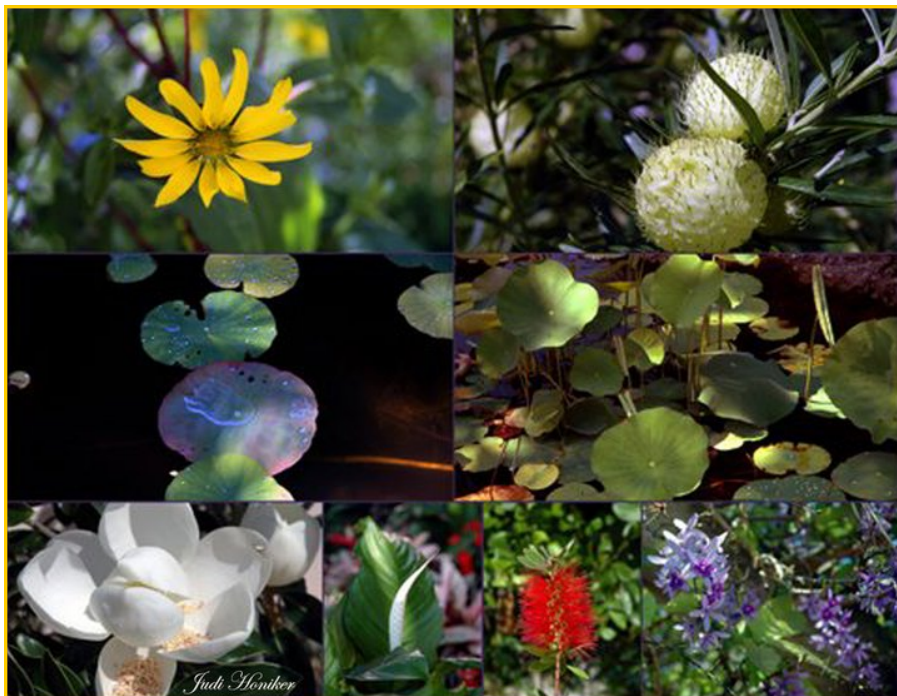
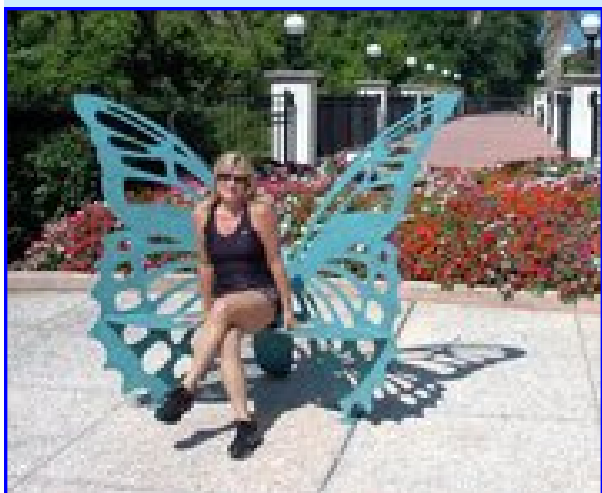


Fan Photos from Florida Botanical Gardens

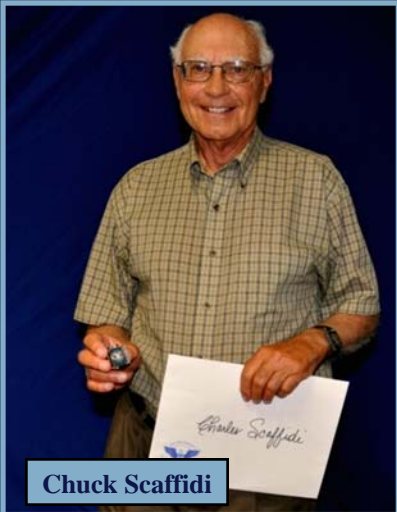
If you haven't signed up, it's easy to do. Use the link below and click on the green sign up button at the top of the page. Become a fan today so that you can view visitor photos and comments. If you have photos of the gardens you would like to share on our Facebook page, we'd love to have them. You can also share your experience at the gardens on the "Wall."

Become a fan, check out our on-line gallery of Garden photos, and invite your friends to become fans as well! [Link to the FBG Facebook](#) ■

Our latest fan Judi Honiker, Destination Publication photographer posted photo at right and is pictured below. Judi also became a FBG Foundation member. **Welcome Jodi!**



MG Volunteers Honored By Pinellas County for Presidential Lifetime Achievement



The Presidential Lifetime Achievement awards were presented to recipients and congratulated by the County Administrator Bob LaSala and the seven County Commissioners (pictured on the previous page). The Master Gardener honorees who have supported Extension were honored for achieving over 4,000 hours of volunteer time. The following recipients and their total hours contributed since graduation follows:

Sam Skemp class of 1986, 20,000 hours
 Robert Abben class of 1994, 7,500 hours*
 John Kingsbury class of 2003, 5,900 hours
 Marcel Pincine class of 2002, 4,700 hours*
 Carla Levesque class of 1994, 4,600 hours
 Jack Moss class of 1987, 4,500 hours
 Jace Pinkard class of 1991, 4,000 hours
 Wayne Huneke class of 1995, 4,000 hours*

Chuck Scaffidi class of 2000, 16,000 hours
 Richard Berube class of 2004, 6,100 hours
 James Wolfinger class of 1999 5,200 hours
 Lillian Wolfinger class of 1996, 4,700 hours
 Brenda Payne class of 1998, 4,600 hours
 Linda Culhane class of 2000, 4,200 hours
 Lois Weber class of 2000, 4,000 hours
 *not present



MGs Donna Zacharczyk and Joanne Drake



Sam Skemp, Carla Levesque and Linda Culhane

**Celebrating People in Action,
April 14, 2011**



There were prizes and these were just two of the winners.



MG Ray Marshall racing to receive his prize



Stacey Zidi and son Zach who won the prize

The Garden Conservancy

Although we have established home garden tours for volunteers, would you like to show case a favorite or unusual garden on another level? If you do, learn about the Garden Conservancy. The FBG Foundation is planning to partner with the conservancy .

Additional information about The Garden Conservancy and the Open Days Program:

The mission of the Garden Conservancy is to preserve exceptional American gardens for the education and enjoyment of the public. Since 1989, we have joined together with gardeners, local organizations, and other like-minded partners:

- To preserve gardens by harnessing the power of communities and the expertise of horticulturists, landscape designers, historians, and preservationists
- To share magnificent spaces and gardening ideas with the public through educational programs and the Open Days garden visiting program
- To raise public awareness of the important role gardens play in America's cultural and natural heritage

Pictured is Longue Vue: A National Historic Landmark house and garden, Longue Vue was devastated in 2005 by Hurricane Katrina, which destroyed the electrical and irrigation systems, uprooted major trees, and inundated most parts of the garden. Six years later, this garden designed by Ellen Biddle Shipman has reclaimed much of its original enchantment and is welcoming visitors to see the splendor of its renewal. The Garden Conservancy continues to work with Longue Vue as it plans for its future.

Call Chuck at 582-2117 or Heather Anderson at 331-2580 for more information. If you visit their web site notice the "Open Days Directory" we have a copy of it in the volunteer office.

<http://www.gardenconservancy.org/> ■



IMPORTANT AND HELP WANTEDANNOUNCEMENTS

■ **The Home Depot** on Tyrone Blvd. in St. Petersburg was busy on Saturday morning April 16th. The department manager, Sandra Bennett had contacted Pinellas County Extension about having an in-store workshop on gardening. Four intrepid MGs were there to help. Phyl Lawson held a short talk on container gardening, Terry Berube demonstrated repotting orchids, Michael Adam discussed vegetable gardening, and Donna Zacharczyk handed out information on programs that Extension promotes. There were lots of questions and Home Depot gave out lots of door prizes. Home Depot also gave the Florida Botanical Gardens a gift of a beautiful blooming orchid as well as orchid fertilizer and planting bark. It was a great experience and helped to promote both extension and the gardens. Another such program is scheduled for May at Lowes in St. Petersburg and help is needed.

Please contact Angela Strain at 526-4188 for details.

■ **Rare Plant Network Hosts Third Annual Sale**

Tired of the same old plants from the big box stores? Want some plants that nobody on your block grows? Hundreds of unusual plants, plus many tried and true plants for the Tampa Bay area, will be for sale at the Rare Plant Network Third Annual public sale on Sunday, May 22, 2011. Doors will open promptly at 10 am and last til 3pm.

The event is co- sponsored by The Rare Plant Network and The Seminole Historical Society. Admission is \$1.00 and includes sale plants, garden art and more - plus the tour of Holloway Haven with its "Old Florida" charm. The Gypsy Wind trio will be strolling the property providing music. Drinking water, a raffle basket and a historical display will be provided by the Seminole Historical Society. Seminole Florida is celebrating 40 years as a city and 100 years as a county!!

The sale will be held at 11500 74 Ave, Seminole, FL 33772. Parking is at the Seminole City Park across the street. Master

Gardeners, vendors, and other experts will be on hand to help with your plant questions.

For more information, call 727-391-7808

IMPORTANT ANNOUNCEMENTS

- Nursery Discounts
- Extension Classes
- Volunteer Hours & VMS
- Garden Yard Tour
- MG Update
- Staff MG Table
- Bear Creek Elementary
- Lakes and Ponds
- The Green Leaf

EDUCATION

- MG CEU Credits
- Palm Harbor Class
- St. Pete Library Class
- Planting Pinellas Blog

**Record Your Volunteer Hours
Please Remember to Sign Out!**

**County VSP system and
procedures apply only to non-
MG volunteers.**

The computer program for logging volunteer hours is outside the volunteer office, near the Help Desk. Make this your first stop and last stop. You must **sign in and sign out** when you are at Extension. When the computer is not functioning you can still log your time in the book. Those who volunteer at other facilities should e-mail hours after each visit. **When not at Extension, please e-mail your hours to:** cscaffidi@co.pinellas.fl.us Direct questions to volunteer coordinator Chuck Scaffidi or assistant Emma Eshbaugh.

**The County VSP system and
procedures applies only to non-
MG volunteers.**

FBGF Members, MGs Can Save On New Spring Plants

One of the benefits of Foundation membership is getting 10% discounts at several local nurseries. Just present your FBGF membership or MG card. We will continue to contact nurseries in the area to secure additional participants. Support our friends at:

Art Stone Orchids
3611 Tyrone Blvd, St. Petersburg
727-345-6733

Country Club Nursery
9850 Starkey Road, Largo
727-397-4438

DragonFly Garden
730 Broadway, Dunedin
727-734-4900

Earthscapes Garden Room
816 Alt. 19 N, Palm Harbor
727-786-4859

Esperanza's Garden Center
6001 Haines Road
St. Petersburg,
727-742-8499

Jene's Tropicals
6831 Central Ave
St. Petersburg
727-344-1668

Kathy's Korner (trees)
Nursery Inc. & Tree Farm
6095 Haines Road N. St. Petersburg
727-525-9640

Palm Harbor Nursery & Landscaping (cash and carry items)
450 Riviere Rd, Palm Harbor
727-784-2992

Summerwood Gardens, Inc.
1171 Tarpon Springs Road
Odessa
813-920-2153

Twigs and Leaves
1013 MLK St. S (9th St),
St. Petersburg
727-822-5400

Wilcox Nursery
12501 Indian Rocks Road, Largo
727-595-2073

Willow Tree Nursery
4401 49th St. N, St. Petersburg
727-522-2594

■ *Extension Classes*

Visit Extension's on-line calendar for a list of classes that are being offered free to MGs, volunteers and FBGF members. (Must show membership card.) All others pay a nominal fee. You can register on-line.

■ *Volunteer Hours for Master Gardeners Only*

We are now able to collect all of your hours in the MG VMS online. Now you can track all of your Pinellas County volunteer time in one place! For any non-Master Gardener work, simply choose the following project category: **[X NON-MG Pinellas County Volunteer Hours](#)** Some examples of volunteer time that go in this new category include:

- working at the FBG gift shop
- working on the Wedding Garden mosaic project

This means that **Master Gardeners** can report all of their time in the new system and will no longer be logging into the County VSP. The system is web-based, secure and user-friendly - you can even jump on from your web-enabled cell-phone if you like. Go to <https://florida.volunteersystem.org> and click on the New User tab.

For those who are unable to input hours, we will still provide a log book and a volunteer to input your hours.

Volunteers, other than MGs, will continue to use the County VSP system and log book outside the volunteer office. Please adhere to the policy described at left.

Important Announcements

- **Garden Yard Tour**- Joy Smith is opening her garden to us on **May 5th**, Thursday, from 10am to noon. Her address is 2018 Kimberly Drive in Dunedin. Joy was active in the daylily society so this one should be great.
- **MG Update**-The MG Update in May will be on **Monday May 9th from 9am- 12pm with a potluck to follow:** Our speaker is Dr. Jim Price, UF/IFAS Assoc. Prof. of Entomology, and he will be talking about Beneficial Insects
- **Staff MG Table**-May Saturdays from 10am-2pm to help Sue Hamill at the MG table.

This Sat we are giving away 500 trees in honor of Earth Day and need help from 10am-12pm and also help from 12pm-2pm . Sues last day to help in May is the 21st. Also 1-2 volunteers to help on sat May 28th.

Remember the day you volunteer, you get 10% off your purchases at Lowes.

E-mail servin307@hotmail.com or call 727-744-5203 **MG Sally Ervin** if you are interested

- **Bear Creek Elementary needs help with a school landscape project**
- **Lakes and Ponds Education day**-This special event is sponsored to educate and support sustainability and management of urban lakes and ponds. Many jobs!

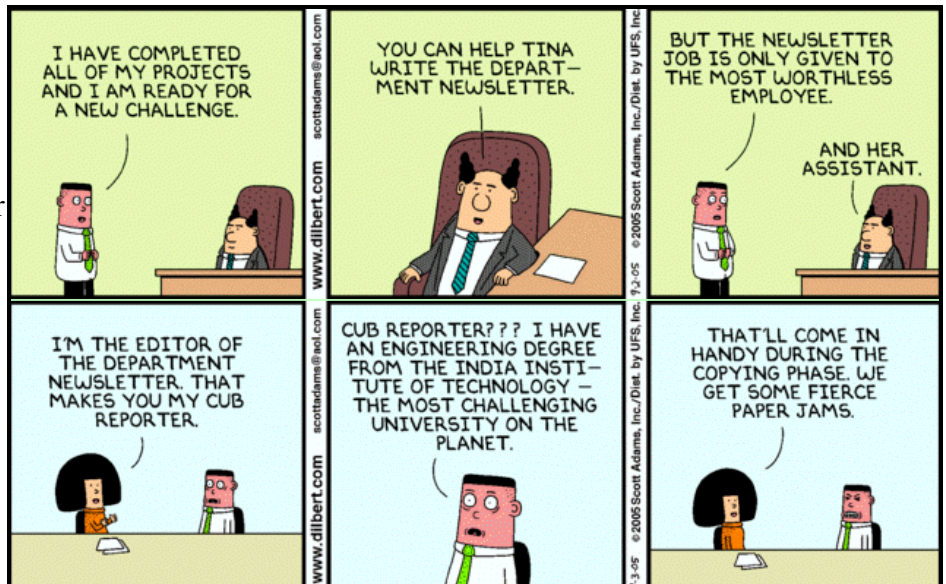
Friday, **May 6** 9am-1pm (Extension or Watershed Mgmt office): Saturday, **May 7** 8am-2pm (Extension building): We need help with attendee sign-in, catering assistance, plant patrol, and information.

- **The Green Leaf**

This is the 11th year I have been Editor of the monthly *Green Leaf*. It is a rewarding experience and was made easy by those that have contributed articles, provided editing assistance, and computer skills. I am always looking for volunteers that would like to be involved in this publishing effort. Please see me.

Chuck
582-2117

cscaffidi@co.pinellas.fl.us



Education

- **Earn Continuing Education Credits**-MGs can earn up to four continuing education credits by completing **Plant ID Modules** at [http:// gardeningsolutions.ifas.ufl.edu/mastergardener/outreach/plant_id/index.shtml](http://gardeningsolutions.ifas.ufl.edu/mastergardener/outreach/plant_id/index.shtml). For instance, one CEU can be earned by studying the plants and earning a passing score of 80% on the “Test Yourself” feature. Once a score of 80% has been reached, print the page and submit it to the Volunteer Office.

- **Palm Harbor Library MG Class Series**

Classes are offered **on the second Thursday of the month from 2 to 3:30 p.m. and from 6:15 to 7:45 p.m.** at the **Palm Harbor Library, 2330 Nebraska Avenue. To register**, go to <http://pinellas.ifas.ufl.edu/> Click on the **Take Action “Register for a program tab”** and then Click **“Extension Service”** You may also call (727) 582-2100.

- **St Petersburg Community Library MG Class Series**

Classes offered free at the main branch of the St. Pete Library located at 3745 Ninth Avenue N. (**This is a change of venue.**) To register, go to <http://pinellas.ifas.ufl.edu/> . Click on the **Take Action “Register for a program tab”** and then click **“Extension Service”** You may also call (727) 582-2100.

- **“Planting Pinellas” blog** Check it out at <http://plantingpinellas.blogspot.com/>

Contact Theresa Badurek at 727-582-2109 or tbadurek@pinellascounty.org to follow up on any of the items.



By **THERESA BADUREK**, Urban Horticulture Extension Agent

The newest class of Master Gardeners has finished the classroom part of their training! They did a fantastic job and they are a wonderful group of people. As you veteran Master Gardeners know, this is really just the beginning of the learning process, so be sure to share your knowledge and experiences with them as they begin to work alongside you. Most of them have jumped right into volunteering with a variety of projects, and they will all be doing some volunteer work at the Lawn and Garden Help Desk.

Please join me in congratulating them on a major accomplishment and welcoming them to the group!

To further appreciate their efforts, I would like to dedicate the next Master Gardener Update to celebrating their hard work and studies. On May 9th our meeting is a potluck party in honor of the new class. Please bring some festive treats to share and come and meet many of our latest MG trainees. (Please see the announcement in this *Green Leaf* for more info on our speaker for that day.) I hope to see you all there!

Thank you so much for all that you do!

Theresa Badurek
727-582-2109
tbadurek@pinellascounty.org

2011 May Thank You, Volunteers!

- **Garden Yard Tour May 5, 10am to noon**
- **MG Update Monday, May 9, 9am to noon, potluck**
- **Lakes and Ponds Education Day, May 6, 9am to 1pm
and May 7, 8am to 2pm**
- **Green Thumb, April 30, May 1**

MG Plant Clinic at the Palm Harbor Library –Wednesdays from 10 a.m. to 2 p.m.
Master Gardeners offer diagnostic services along with information about identifying plants, treatment for insects and ideas for Florida-Friendly landscaping.

For details on some of the events listed go to the calendar on the Pinellas County Extension Lawn & Garden website. <http://www.pinellascounty.org/scripts/publish/webevent.pl?>